

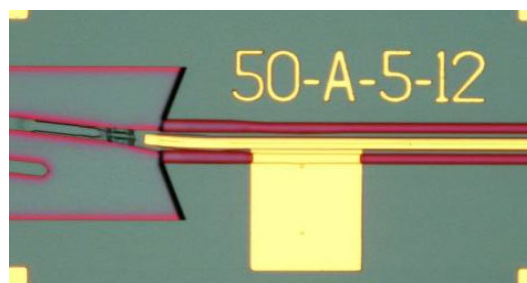
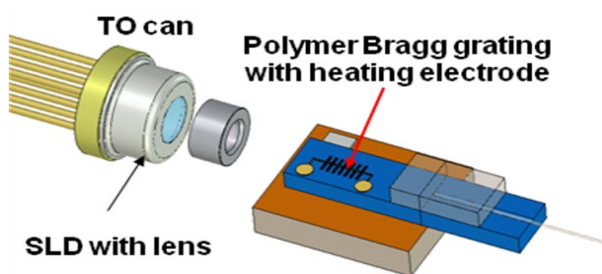
High-Power SLD Chip Technology (SLD)

Technology Overview

- Core component technology based on low-cost, tunable WDM-PON systems
- Light source component technology for 1.25, 2.5Gb/s PLC-ECL

System Configuration

- Light sources (SLD) for 1.25Gb/s, 2.5Gb/s 16-channel PLC-ECL modules
- External resonant tunable lasers and external resonant lasers



Application Products/Service

- Wavelength-variable core components for WDM-PON systems
- High-quality optical access network core light source including UCC, IP-TV, U-healthcare, defense, high-end business networks, etc.

